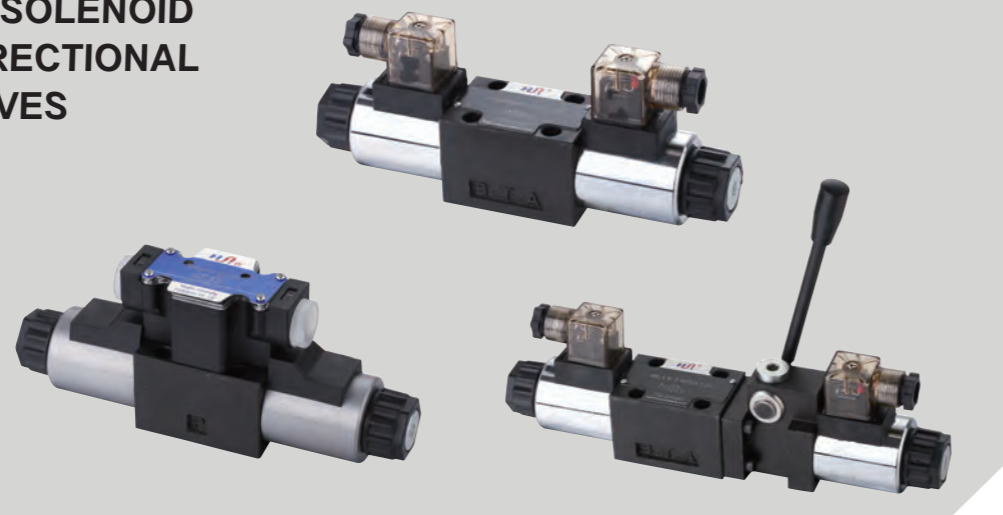


DWG6型电磁换向阀

DWG6 SERIES SOLENOID OPERATED DIRECTIONAL CONTROL VALVES



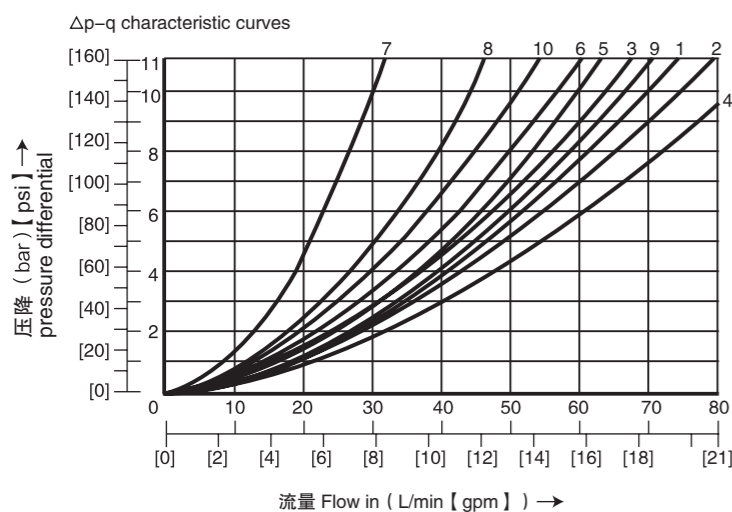
DWG6型方向控制阀是电磁铁操纵的换向阀,用以控制油液的开启、停止和换向。

DWG6 series directional control valves are solenoid operated directional spool valves ,these valves are used to the start ,stop and direct flow.

技术参数 Technical data

口径 Size	6	
最大流量(L/min) Max.flow rate(L/min)	60	
工作压力(MPa) Operating pressure(MPa)	A、B、P油口31.5 / A、B、P oil port 31.5	
	T油口16 / T oil port 16	
不带手柄/带手柄 Without Handle/With Handle 重量(千克) Weight(KGS)	单头	1.6/2.2
	双头	2.2/2.8
阀体 (材料) 表面处理 Valve body (Material) Surface treatment	铸件 表面磷化处理 casting phosphating surface	

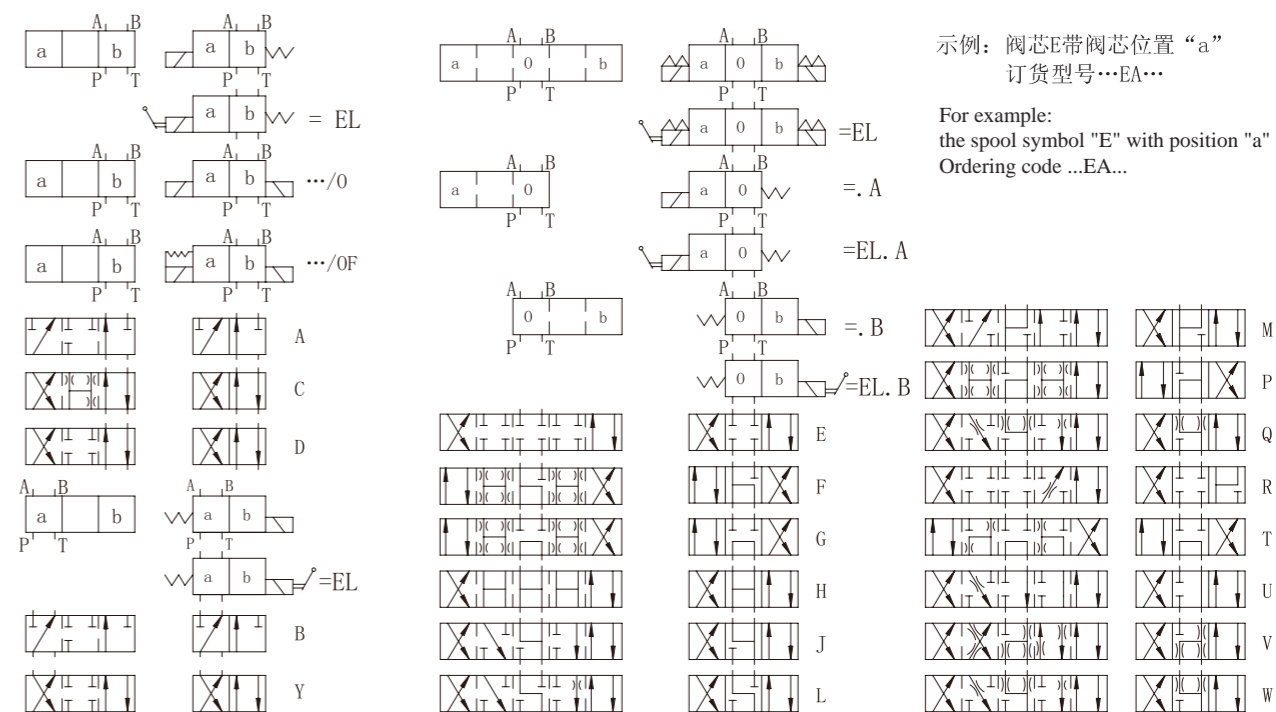
特性曲线 (在使用 HLP46 测量, $\nu_{油} (\nu = 190 \text{ SUS}) = 40^\circ\text{C} \pm 5^\circ\text{C} [104^\circ\text{F} \pm 9^\circ\text{F}]$ 测得)
 Characteristic curves (measured with HLP46, $\nu_{oil}=40^\circ\text{C} \pm 5^\circ\text{C}[104^\circ\text{F} \pm 9^\circ\text{F}]$)



机能符号 Spool symbol	流向 Flow direction			
	P-A	P-B	A-T	B-T
A; B	3	3	-	-
C	1	1	3	1
D; Y	5	5	3	3
E	3	3	1	1
F	1	3	1	1
T	10	10	9	9
H	2	4	2	2
J; Q	1	1	2	1
L	3	3	4	9
M	2	4	3	3
P	3	1	1	1
R	5	5	4	-
V	1	2	1	1
W	1	1	2	2
G	6	6	9	9

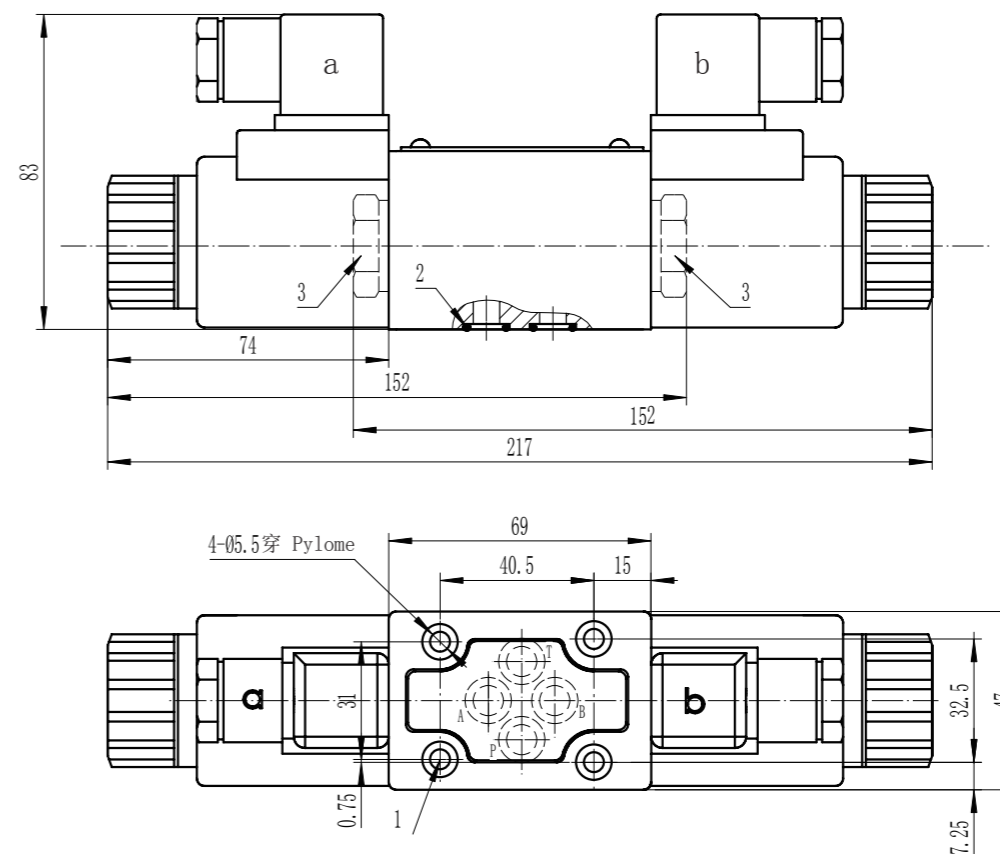
7 阀芯机能符号R处于控制位置B → A 7 Spool symbol "R" in spool position B → A
 8 阀芯机能符号G和T在中心位置 8 Spool symbol "G" and "T" in central position
 9 阀芯机能符号H和T在中心位置P → T 9 Spool symbol "H" and "T" in central position P → T

机能符号 Spool symbols



示例: 阀芯E带阀芯位置 "a"
 订货型号...EA...
 For example:
 the spool symbol "E" with position "a"
 Ordering code ...EA...

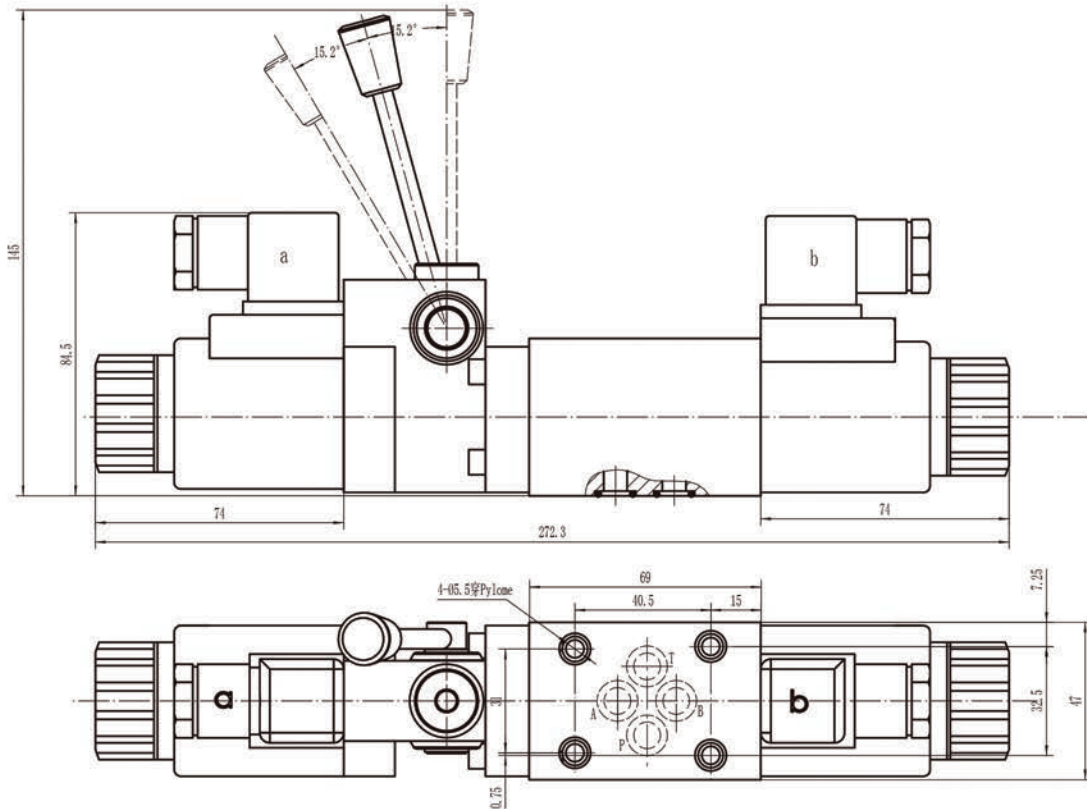
DWG6外型尺寸 DWG6 Subplate Installation Dimensions



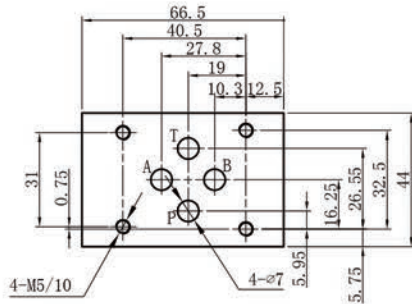
1. 阀固定螺丝:
4个M5X45 GB/T70.1-12.9级
拧紧扭矩Ma=8.9Nm
2. O型圈 $\phi 12.3 \times 1.9$
3. 用于1个电磁阀的堵头

1. Valve's set screw
4 of M5 x 45 GB/T70.1-12.9
Tightening torque Ma=8.9Nm.
2. O-ring $\phi 12.3 \times 1.9$
3. Plug screw for valves with one solenoid.

DWG6-EL 外型尺寸 DWG6-EL Subplate Installation Dimensions



DWG6底板安装尺寸 DWG6 Subplate Installation Dimensions



Z1DS6, Z2DS6, Z2FDS6, ZPB6, ZPR6
安装尺寸相同

Installations are the same with
Z1DS6, Z2DS6, Z2FDS6, ZPB6, ZPR6

4	DWG	6	*	E	60	*	DC24	N	Z5L	*	*	*
---	-----	---	---	---	----	---	------	---	-----	---	---	---

3=三油口
4=四油口
3=3-way
4=4-way

通径 6 Size 6

1、无=不带手动换向模块
2、EL=带手动换向模块
1.No code=Without hand lever
2.EL=With hand lever

机能符号 Spool type

系列号 60=60螺纹连接电磁铁
Series 60=60 Solenoid coils with thread connection

无=弹簧复位; O=无复位弹簧; OF=带定位器
No code=With spring return; O=Without spring return
OF=Without spring return with detent

电压 Voltage
DC12; DC24 ; AC110; AC220

For further details 附加说明

无=丁腈橡胶 V=氟橡胶
No code=NBR seals
V=FPM seals

无=无插装节流器 B0.8=节流孔径0.8
B10=节流孔径1.0; B12=节流孔径1.2
No code=Without orifice insert
B08=Orifice size 0.8mm
B10=Orifice size 1.0mm
B12=Orifice size 1.2mm

Z5L=带灯大方形插头
ZC=防水插头 JS=接线盒
Z5L=Large quadrate plug with light
ZC=Waterproof connector
JS=Wire box connector

N=有故障检查按钮; 无=没有故障检查按钮
N=With concealed manual override
No Code =Without concealed manual override