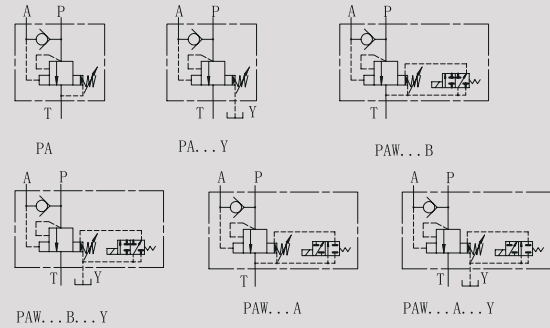


PA/PAW 型先导式卸荷阀

PA/PAW SERIES PILOT OPERATED UNLOADING VALVES

符号 SYMBOL



PA/PAW型阀是先导控制的卸荷溢流阀。此系列主要作用是在有蓄能器系统中当蓄能器工作时使油泵卸荷；在高低压油泵系统中使高压泵工作，使低压泵卸荷。

PA/PAW series are pilot operated pressure unloading valves. This series are used to unload the oil pumps' pressure in a hydraulic system with accumulator. The valve allows high-pressure pump to operate and low-pressure pump to unload pressure.

技术参数 Technical data

通径 Size	10	20	30
工作压力(Mpa) Operating pressure(Mpa)	31.5		
最大流量(L/min) Max. flow rate(L/min)	40	100	250
阀体 (材料) 表面处理 Valve body (Material) Surface treatment	铸件 表面喷蓝漆 casting surface blue paint		
油液清洁度/Oil cleanliness	NAS1638 9级和ISO4406 20/18/15级 NAS1638 class 9 and ISO4406 class 20/18/15		

CADIRIRI

www.cadiriri.com.br

formularios@cadiriri.com.br

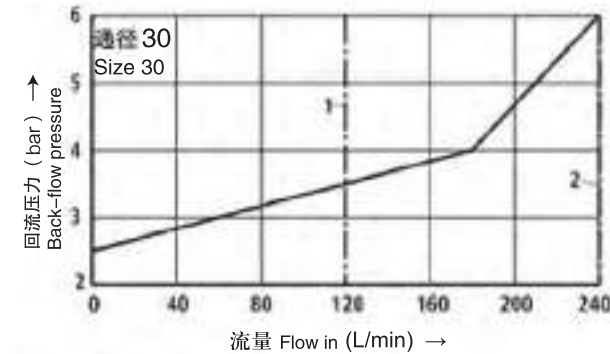
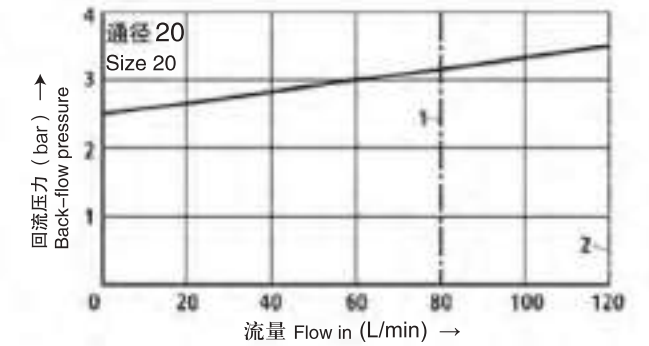
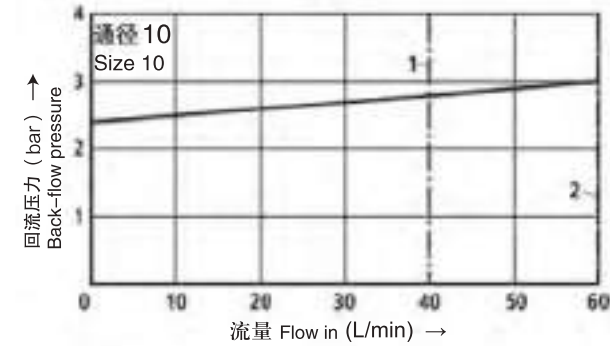
(11) 2601-2839

(11) 96393-2796

特性曲线 (在使用 HLP46, 油=40°C ± 5°C时测得)

Characteristic curves (measured with HLP46, Voil=40°C ± 5°C)

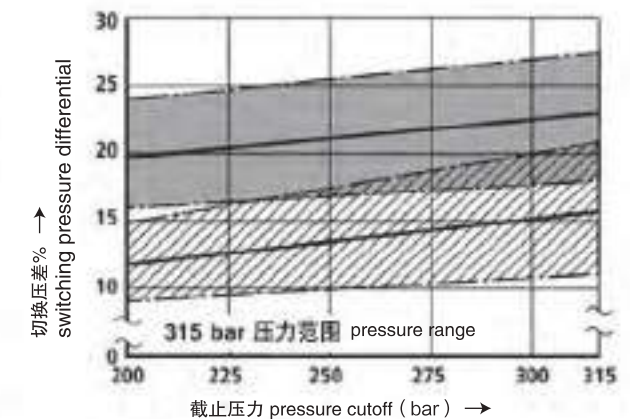
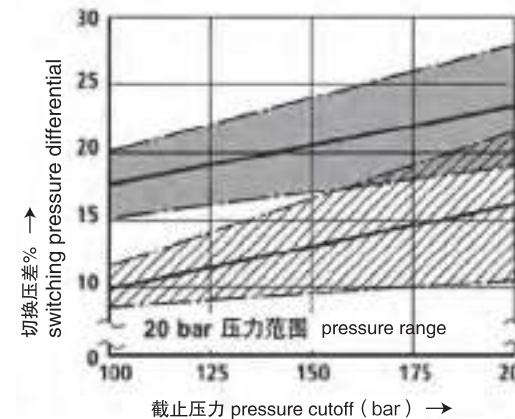
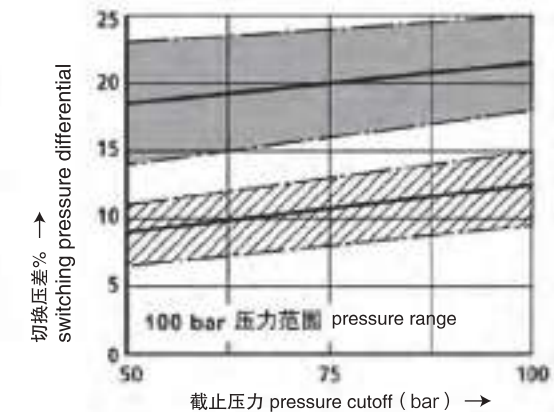
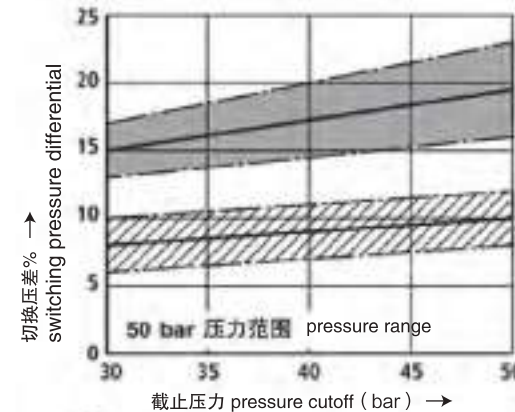
回流压力与泵流量 q_{vp} (P → A) Back-flow pressure and Pump flow



1 $q_{v\rho_{max}}$ 用于10%型 1 $q_{v\rho_{max}}$ for type 10%
2 $q_{v\rho_{max}}$ 用于17%型 2 $q_{v\rho_{max}}$ for type 17%

这些特性曲线在整个流量范围内对出口压力 (T) = 0 有效
All these curves are available when output pressure (T) = 0 with the flow ranges.

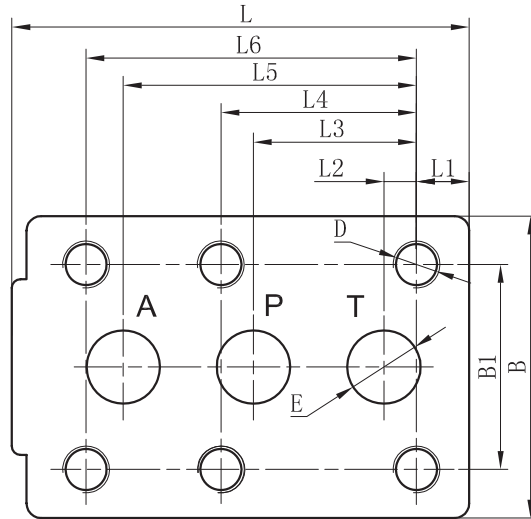
切换压差与截止压力 (P → A) 的关系 Characteristic of switching pressure differential and pressure cutoff (P → A)



= 10% 型变化范围
Type 10% variation range

= 17% 型变化范围
Type 17% variation range

底板安装尺寸 Subplate Installation dimensions



通径 Size	L	L1	L2	L3	L4	L5	L6	B	B1	D	E	PA/重量(千克) Weight(KGS)	PAW/重量(千克) Weight(KGS)
10	94	16.6	7.1	35.7	42.9	62.7	/	84	66.7	4-M10/20	3-Φ10	3.8	5.3
20	158	14.3	11.1	55.6	66.7	100	112.7	103	66.9	6-M16/25	3-Φ25	7.9	9.4
30	199	14.8	12.7	76.2	88.9	127	139.7	118.5	82.5	6-M18/25	3-Φ32	12.3	13.8

PA W 10 A 1 60/80 Y DC24 N Z5L/V *

型号 Model

无 = 不带电磁阀
 W = 带电磁阀
 No code=Without directional valve
 W=With directional valve

通径: 10; 20; 30
 Size=10;20;30

A=常闭 B=常开
 A=Normally closed;B=Normally open

1=带手柄; 2=带保护调节螺栓
 1=Adjustable knob
 2=Hexagonal nut and protective cap

系列号 Series Number
 80=2-8MPa; 160 = 8-16MPa; 315 = 16-31.5MPa

附加说明
 For further details

无=丁腈橡胶
 V=氟橡胶
 No code=NBR seals
 V=FPM seals

Z5L=带灯的大方形插头
 Z5L=Large quadrate plug with light

无 = 没有故障检查按钮
 N = 有故障检查按钮
 No code=Without manual override
 N=With manual override

AC220=交流220V; DC24 = 直流24V
 AC220=AC 220V;DC24=DC 24V

无 = 内供内排; Y = 内供外排
 No code=Internally piloted,internally drained
 Y=Internally piloted;externally drained